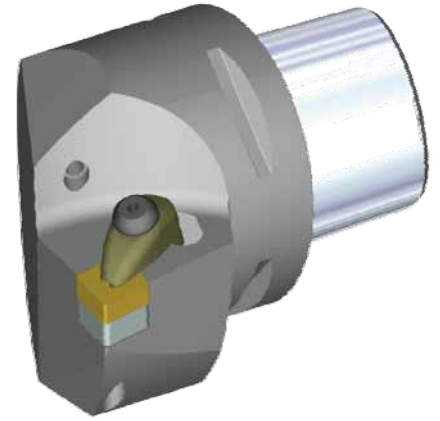
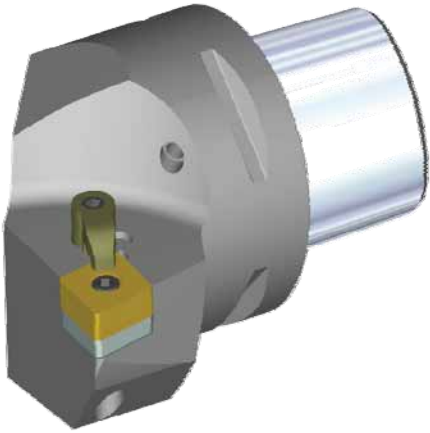


PSC63™
Portfolio

ERICKSON™



ERICKSON™

PSC63™ Portfolio

DIN / ISO 26623

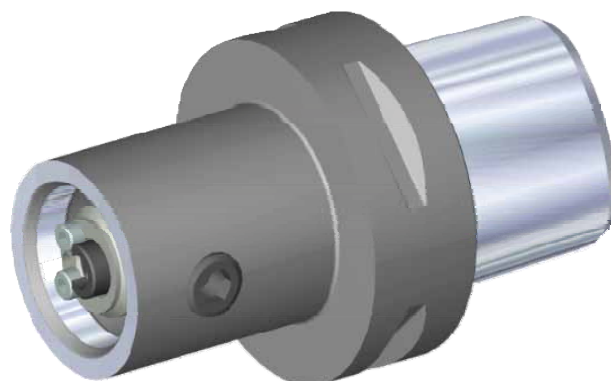


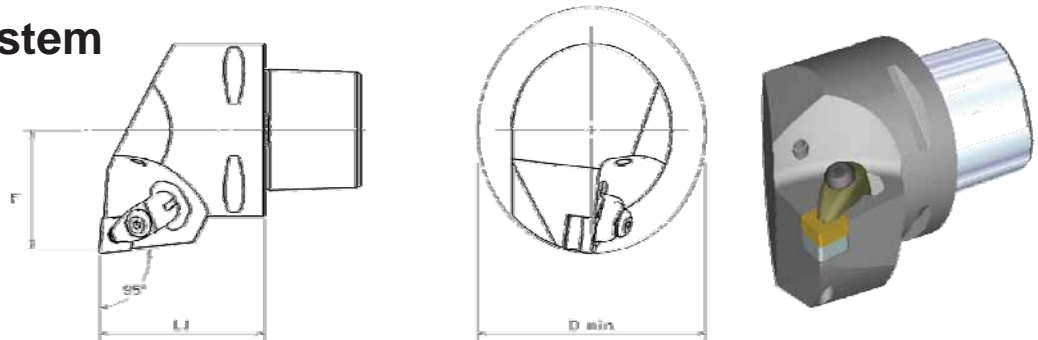
Table of Content

- **PSC63™ tooling for lathe applications**
- **PSC63™ tooling for multitasking applications**
- **PSC63™ tooling for rotating applications**

PSC63™ Tools for lathe applications

- **D – Clamping System**
- **M – Clamping System**
- **S – Clamping System**
- **Grooving**
- **Modular Grooving System**
- **Threading**

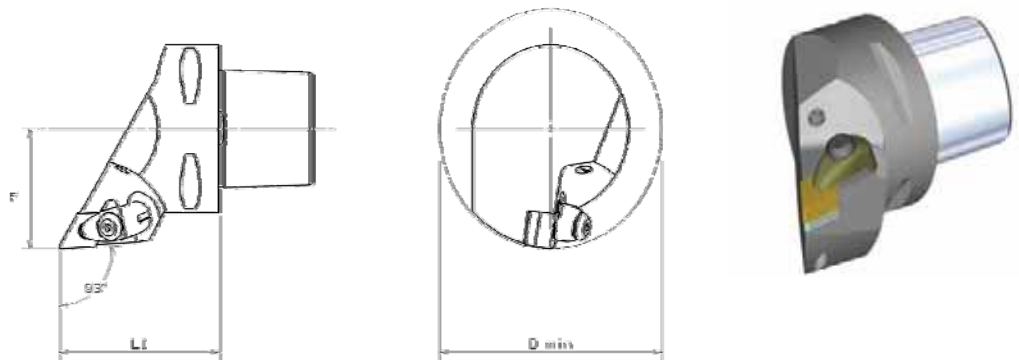
D – Clamping System



DCLN 95°

Order no.	PSC Size	Cat. No.	RH LH N	F mm	L1 mm	D min	Insert	Insert	Shim	Shim Screw	Clamp Assembly	Spring Pin	Torx plus wrench
4090811	63	PSC63DCLNR12KC04	RH	45	65	90	CNMA120408	CNMA-432	ICSN 443	KMSP-4-15IP	CM234R ASSY	SSP025-016M	K-15IP
4090812	63	PSC63DCLNL12KC04	LH	45	65	90	CNMA120408	CNMA-432	ICSN 443	KMSP-4-15IP	CM234R ASSY	SSP025-016M	K-15IP

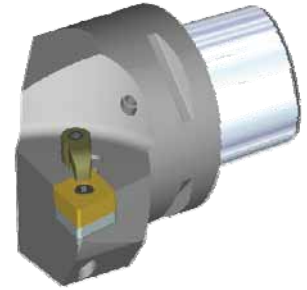
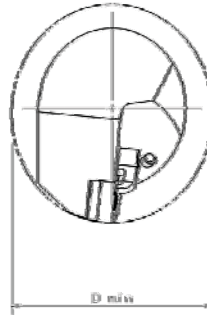
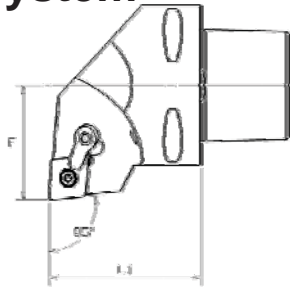
D – Clamping System



DDJN 93°

Order no.	PSC Size	Cat. No.	RH LH N	F mm	L1 mm	D min	Insert	Insert	Shim	Shim Screw	Clamp Assembly	Spring Pin	Torx plus wrench
4091353	63	PSC63DDJNR15KC06	RH	45	65	90	DNMA150608	DNMA-442	IDSN-433	KMSP-4-15IP	CM234R ASSY	SSP025-016M	K-15IP
4091354	63	PSC63DDJNL15KC06	LH	45	65	90	DNMA150608	DNMA-442	IDSN-433	KMSP-4-15IP	CM234R ASSY	SSP025-016M	K-15IP

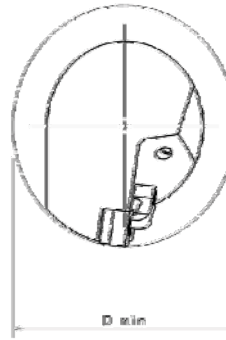
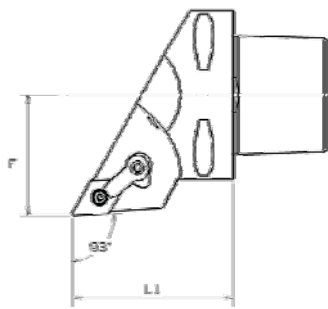
M – Clamping System



MCLN 95°

Order no.	PSC Size	Cat. No.	RH LH N	F mm	L1 mm	D min	Insert	Insert	Shim	lock pin	Clamp	Clamp screw
4094728	63	PSC63MCLNR12	RH	45	65	90	CNMA120408	CNMA-432	ICSN-432	KLM-46	CKM-20	STCM-11
4094729	63	PSC63MCLNL12	LH	45	65	90	CNMA120408	CNMA-432	ICSN-432	KLM-46	CKM-20	STCM-11
4094730	63	PSC63MCLNR16	RH	45	65	90	CNMA160612	CNMA-543	ICSN-533	KLM-58	CKM-20	STCM-11
4094731	63	PSC63MCLNL16	LH	45	65	90	CNMA160612	CNMA-543	ICSN-533	KLM-58	CKM-20	STCM-11

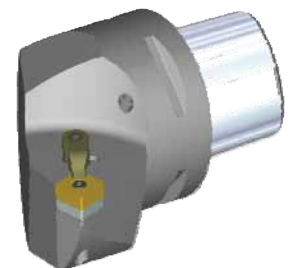
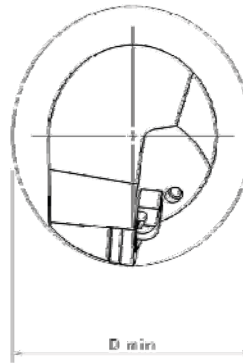
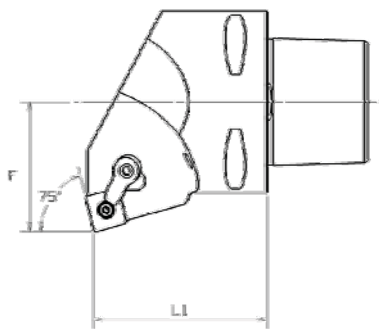
M – Clamping System



MDJN 93°

Order no.	PSC Size	Cat. No.	RH LH N	F mm	L1 mm	D min	Insert	Insert	Shim	lock pin	Clamp	Clamp screw
4094732	63	PSC63MDJNR1506	RH	45	65	90	DNMA150608	DNMA-442	IDSN-432	KLM-46L	CKM-23	STCM-11
4094763	63	PSC63MDJNL1506	LH	45	65	90	DNMA150608	DNMA-442	IDSN-432	KLM-46L	CKM-23	STCM-11

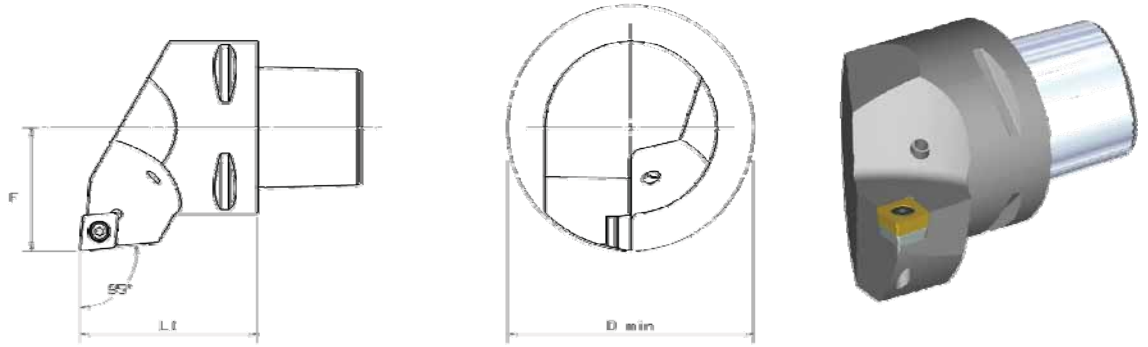
M – Clamping System



MSKN 75°

Order no.	PSC Size	Cat. No.	RH LH N	F mm	L1 mm	D min	Insert	Insert	Shim	lock pin	Clamp	Clamp screw
4094764	63	PSC63MSKNR12	RH	45	65	90	SNMA120408	SNMA-432	ISSN-432	KLM-46	CKM-20	STCM-11
4094765	63	PSC63MSKNL12	LH	45	65	90	SNMA120408	SNMA-432	ISSN-432	KLM-46	CKM-20	STCM-11
4094766	63	PSC63MSKNR15	RH	45	65	90	SNMA150612	SNMA-543	ISSN-533	KLM-58	CKM-20	STCM-11
4094767	63	PSC63MSKNL15	LH	45	65	90	SNMA150612	SNMA-543	ISSN-533	KLM-58	CKM-20	STCM-11

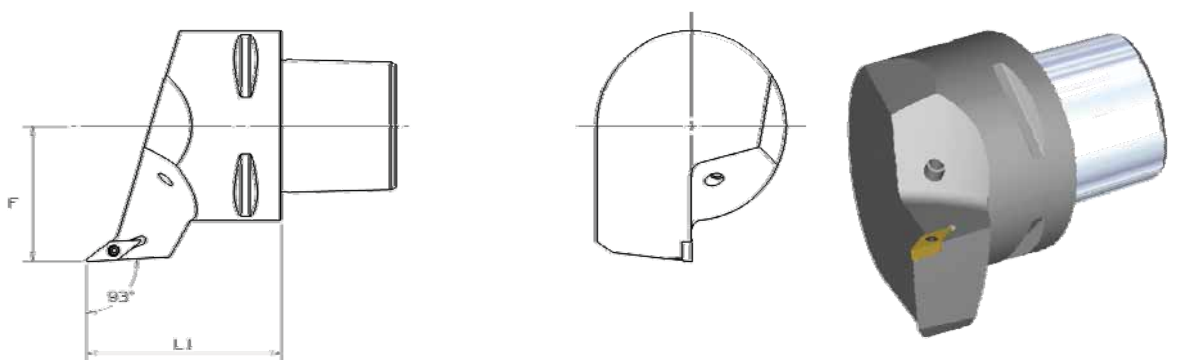
S – Clamping System



SCLC 95°

Order no.	PSC Size	Cat. No.	RH LH N	F mm	L1 mm	D min	Insert	Insert	Shim	Shim screw	Clamp screw
4109536	63	PSC63SCLCR12	RH	45	65	90	CCMT120408	CCMT-432	SKCP-453	SRS-4	MS-1158
4109537	63	PSC63SCLCL12	LH	45	65	90	CCMT120408	CCMT-432	SKCP-453	SRS-4	MS-1158

S – Clamping System

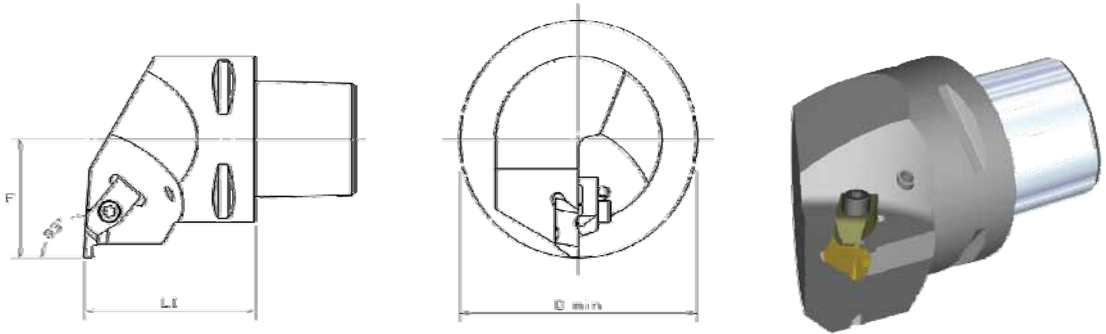


SVJB 95°

Order no.	PSC Size	Cat. No.	RH LH N	F mm	L1 mm	Insert	Insert	Shim	Shim screw	Clamp screw
4109538	63	PSC63SVJBR11	RH	45	65	VBMT110304	VBMT-221	n/a	n/a	MS-1153
4109539	63	PSC63SVJBL11	LH	45	65	VBMT110304	VBMT-221	n/a	n/a	MS-1153
4109540	63	PSC63SVJBR16	RH	45	65	VBMT160408	VBMT-332	SKVN-343	SRS-3	MS-1156
4109541	63	PSC63SVJBL16	LH	45	65	VBMT160408	VBMT-332	SKVN-343	SRS-3	MS-1156

Threading and Grooving

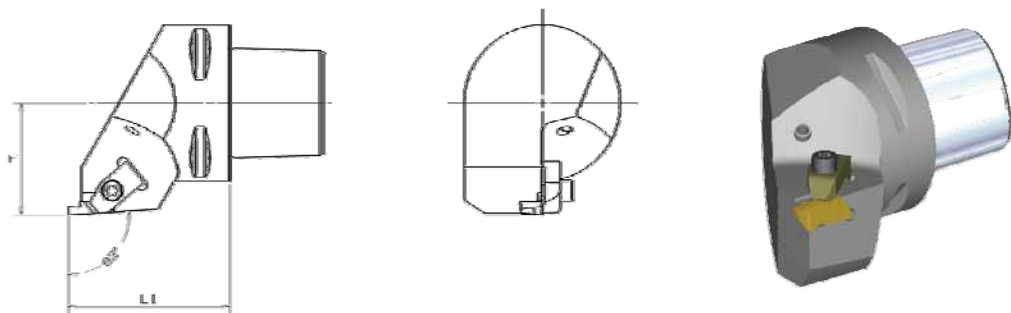
NE



Order no.	PSC Size	Cat. No.	RH LH N	F mm	L1 mm	D min	Insert	Clamp	Clamp screw
4092485	63	PSC63NER3	RH	45	65	90	NG-3L	CM-73	MS-1489
4092486	63	PSC63NEL3	LH	45	65	90	NG-3R	CM-72	MS-1489
4092487	63	PSC63NER4	RH	45	65	90	NG-4L	CM-73	MS-1489
4092488	63	PSC63NEL4	LH	45	65	90	NG-4R	CM-72	MS-1489

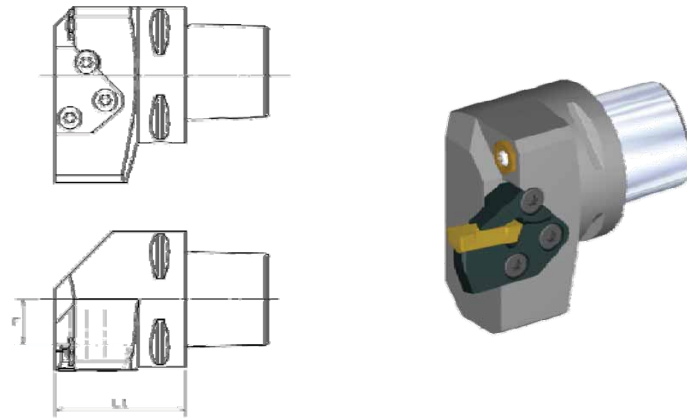
Threading and Grooving

NS



Order no.	PSC Size	Cat. No.	RH LH N	F mm	L1 mm	Insert	Clamp	Clamp screw
4092489	63	PSC63NSR3	RH	45	65	NG-3R	CM-72	MS-1489
4092490	63	PSC63NSL3	LH	45	65	NG-3L	CM-73	MS-1489
4092491	63	PSC63NSR4	RH	45	65	NG-4R	CM-72	MS-1489
4092492	63	PSC63NSL4	LH	45	65	NG-4L	CM-73	MS-1489

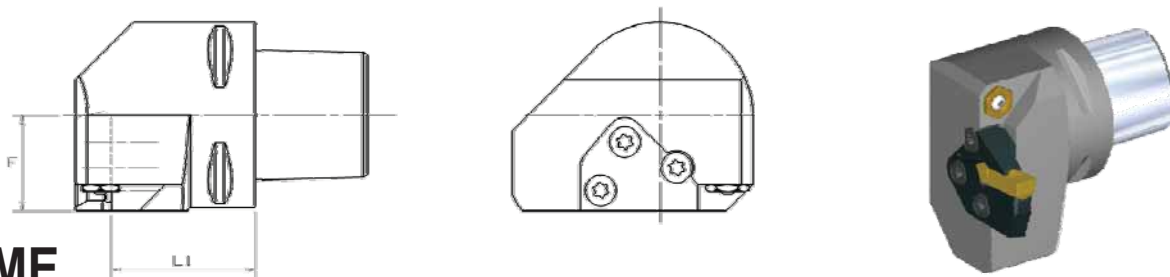
Modular Grooving System



KGMS

Order no.	PSC Size	Cat. No.	RH LH N	F mm	L1 mm	blade screw	blade screw quantity	Clamp screw	Clamp screw quantity	coolant Nozzles	Blade
1756590	63	PSC63KGMSR50	RH	22	65,5	MS-1162	2	MS-2002	1	PMT04525	RH 50 Series
1756592	63	PSC63KGMSL50	LH	22	65,5	MS-1162	2	MS-2002	1	PMT04525	LH 50 Series
4105857	63	PSC63KGMSR65	RH	21	60,5	MS-1163	2	MS-1163	1	PMT04525	RH 65 Series
4105858	63	PSC63KGMSL65	LH	21	60,5	MS-1163	2	MS-1163	1	PMT04525	LH 65 Series

Modular Grooving System

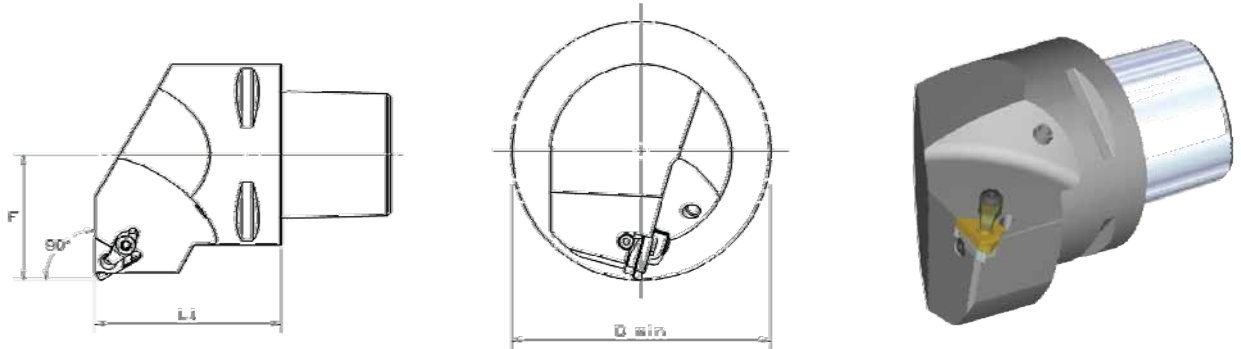


KGME

Order no.	PSC Size	Cat. No.	RH LH N	F mm	L1 mm	blade screw	blade screw quantity	Clamp screw	Clamp screw quantity	coolant Nozzles	Blade
1756593	63	PSC63KGMER50	RH	32,5	48	MS-1162	2	MS-2002	1	PMT04525	LH 50 Series
1756595	63	PSC63KGMEL50	LH	32,5	48	MS-1162	2	MS-2002	1	PMT04525	RH 50 Series
4105859	63	PSC63KGMER65	RH	32,5	49	MS-1163	2	MS-1163	1	PMT04525	LH 65 Series
4105860	63	PSC63KGMEL65	LH	32,5	49	MS-1163	2	MS-1163	1	PMT04525	RH 65 Series

Threading

LSE

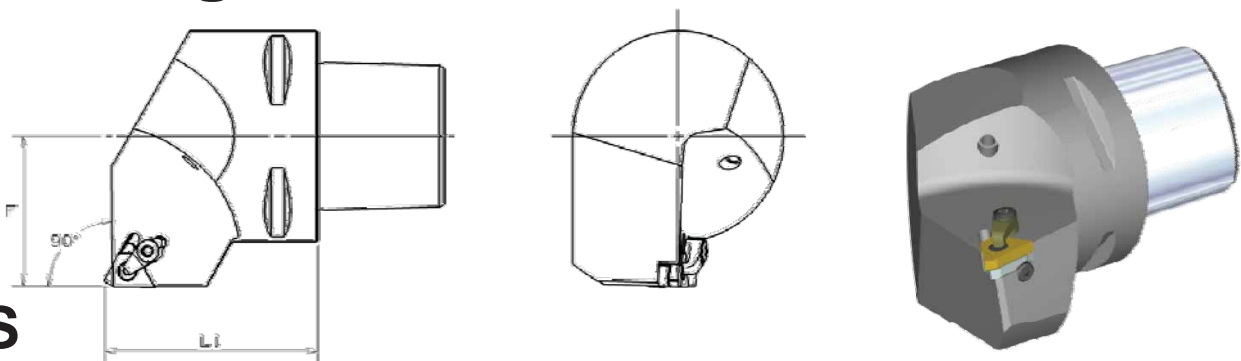


Order no.	PSC Size	Cat. No.	RH LH N	F mm	L1 mm	D min	Insert	Insert Screw	Shim	Shim screw	Clamp assembly
4100715	63	PSC63LSER16N	RH	45	65	90	LT16NR	SSA3T	SMY13	SSY3T	CK-C3
4100716	63	PSC63LSEL16N	LH	45	65	90	LT16NL	SSA3T	SMYE3	SSY3T	CK-C3
4100717	63	PSC63LSER22N	RH	45	65	90	LT22NR	SSA4T	SMY14	SSY4T	CK-C4
4100718	63	PSC63LSEL22N	LH	45	65	90	LT22NL	SSA4T	SMY14	SSY4T	CK-C4

Note: Insert Screw and Clamp Assembly can not be used at the same time

Threading

LSS



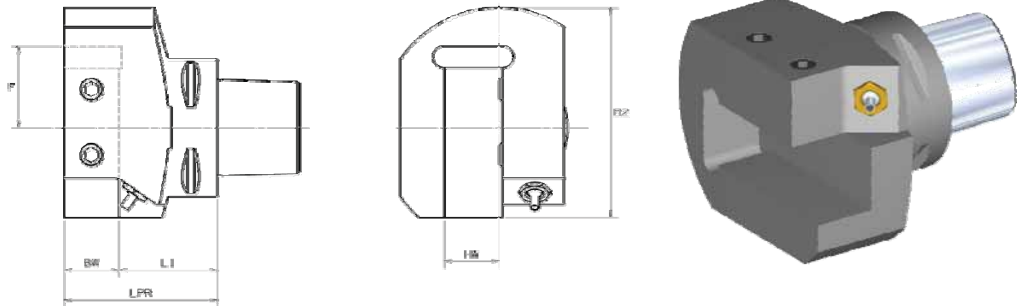
Order no.	PSC Size	Cat. No.	RH LH N	F mm	L1 mm	Insert	Insert Screw	Shim	Shim screw	Clamp assembly
4100719	63	PSC63LSSR16	RH	45	65	LT16ER	SSA3T	SMYE3	SSY3T	CK-C3
4100720	63	PSC63LSSL16	LH	45	65	LT16EL	SSA3T	SMYE3	SSY3T	CK-C3
4100721	63	PSC63LSSR22	RH	45	65	LT22ER	SSA4T	SMY14	SSY4T	CK-C4
4100722	63	PSC63LSSL22	LH	45	65	LT22EL	SSA4T	SMY14	SSY4T	CK-C4

Note: Insert Screw and Clamp Assembly can not be used at the same time

PSC63™ Tools for Multitasking Applications

- **End Mount Square Shank Adapter**
- **Side Mount Square Shank Adapter**
- **45° Mount Square Shank Adapter**
- **KM25 Multi-Station Tool**

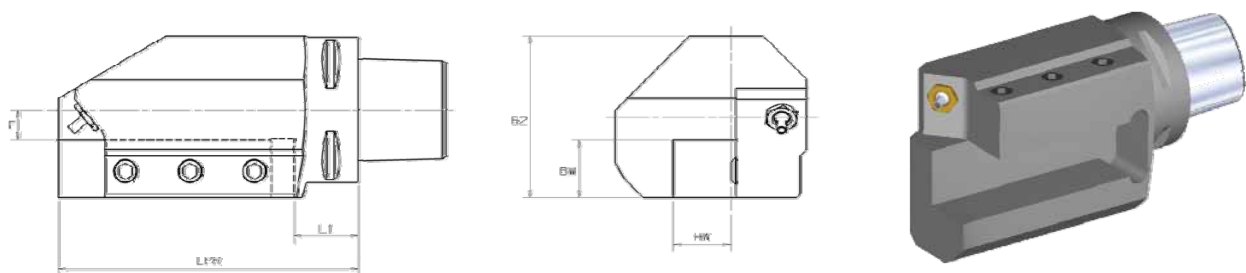
End Mount Square Shank Adapter



ETA

Order no.	PSC Size	Cat. No.	RH LH N	L1 mm	LPR mm	F mm	HW mm	BW mm	B2 mm	Clamp screw	Nm	Coolant Nozzle
4120461	63	PSC63ETAR2020M	RH	40	60	37,5	20	20	92,5	MS2049	35	PMT04526
4120462	63	PSC63ETAL2020M	LH	40	60	37,5	20	20	92,5	MS2049	35	PMT04526
4120773	63	PSC63ETAR2525M	RH	45	70	37,5	25	25	96	MS1430	55	PMT04526
4120774	63	PSC63ETAL2525M	LH	45	70	37,5	25	25	96	MS1430	55	PMT04526

Side Mount Square Shank Adapter



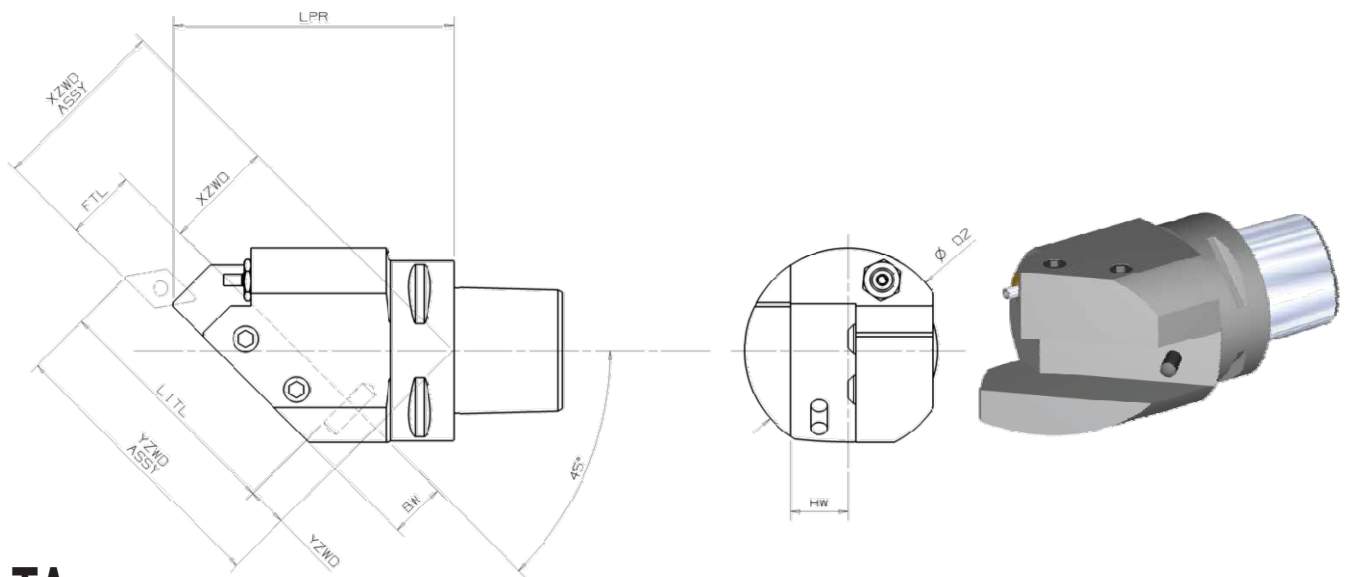
STA

Order no.	PSC Size	Cat. No.	RH LH N	L1 mm	LPR mm	F mm	HW mm	BW mm	B2 mm	Clamp screw	Nm	Coolant Nozzle
4120775	63	PSC63STAL2020M	RH	28	105	10	20	20	62	MS2049	35	PMT04526
4120776	63	PSC63STAR2020M	LH	28	105	10	20	20	62	MS2049	35	PMT04526
4120777	63	PSC63STAL2525M	RH	28	130	13	25	25	70	MS1430	55	PMT04526
4120778	63	PSC63STAR2525M	LH	28	130	13	25	25	70	MS1430	55	PMT04526

45° Mount Square Shank Adapter

XZWD ASSY = XZWD + FTL

YZWD Assy = YZWD + L1TL



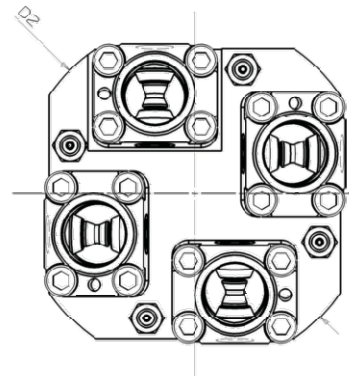
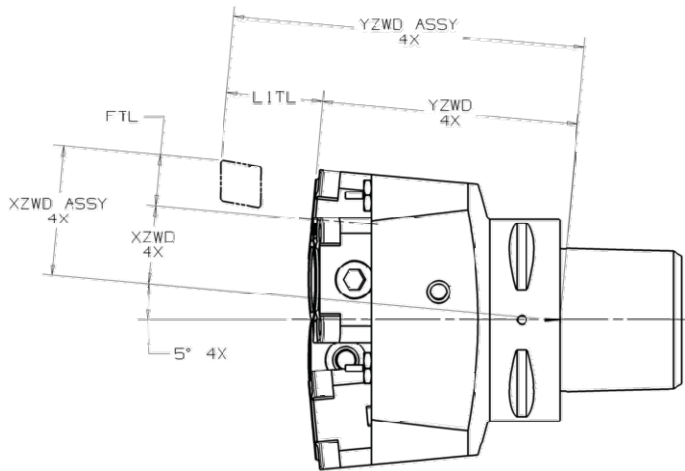
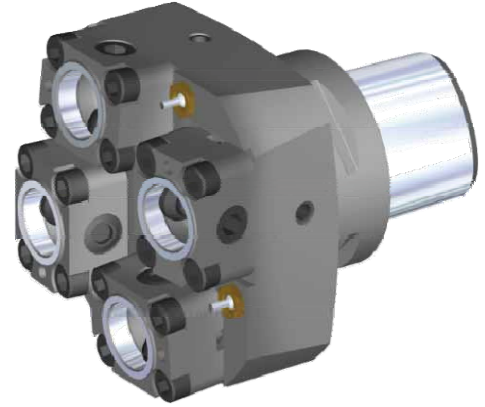
45° TA

Order no.	PSC Size	Cat. No.	RH LH N	D2 mm	LPR mm	XZWD mm	YZWD mm	HW mm	BW mm	Clamp screw	Nm	Coolant Nozzle
4120779	63	PSC6345TAR2020	RH	72	99	38,64	14,44	20	20	MS2049	35	PMT04526
4120780	63	PSC6345TAL2020	LH	72	99	38,64	14,44	20	20	MS2049	35	PMT04526

KM25 Multi-Station Tool

XZWD ASSY = XZWD + FTL

YZWD Assy = YZWD + L1TL



(4x) STA-KM25

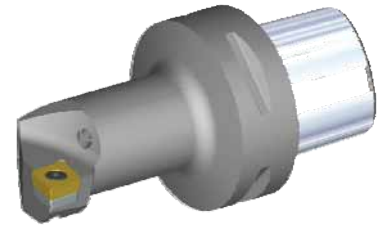
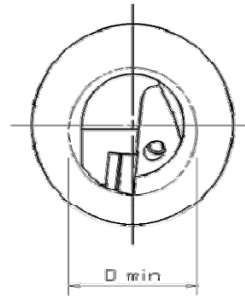
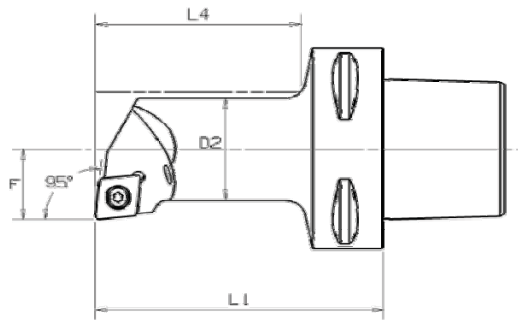
LEFT HAND TOOL

Order no.	PSC Size	Cat. No.	RH LH N	D2 mm	XZWD mm	YZWD mm	KM25 Flange 4 x	coolant nozzles 4 x	Repair Package
2614689	63	PSC634XSTALKM25	LH	110	24,63	80	KM25NCMSF3140	PMT08420	KM25NRPKG

PSC63™ Tools for rotating application

- **S – Clamping System ID**
- **Threading and Grooving ID**
- **Threading ID**
- **Hydraulic Chuck**
- **Boring Bars Adapter Internal Coolant**
- **Endmill Adapter**
- **ER Collet Chuck**
- **Shell Mill Adapter Through Coolant**
- **Drill Adapter**
- **PSC63™ to KM Clamping Unit**

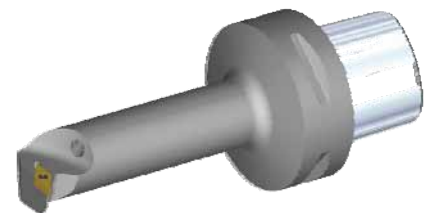
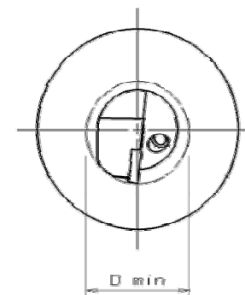
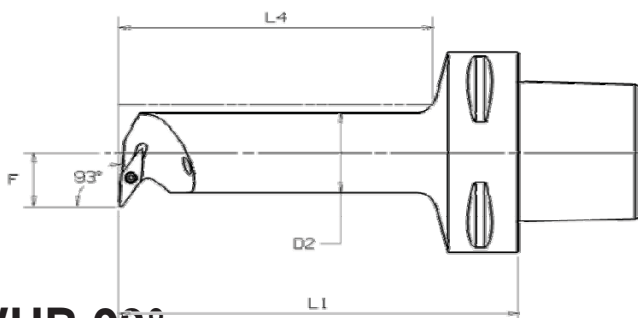
S – Clamping System ID



SCLC 95°

Order no.	PSC Size	Cat. No.	RH LH N	F mm	L1 mm	L4 mm	D2 mm	D min mm	Insert	Insert	Shim	Shim screw	Clamp screw
4103000	63	PSC63S32GSCLCR12	RH	22	90	64	32	40	CCMT12040	CCMT-432	SKCP-453	SRS-4	MS-1158
4103001	63	PSC63S32GSCLCL12	LH	22	90	64	32	40	CCMT12040	CCMT-432	SKCP-453	SRS-4	MS-1158
4103002	63	PSC63S40LSCLCR12	RH	27	140	115	40	50	CCMT12040	CCMT-432	SKCP-453	SRS-4	MS-1158
4103003	63	PSC63S40LSCLCL12	LH	27	140	115	40	50	CCMT12040	CCMT-432	SKCP-453	SRS-4	MS-1158

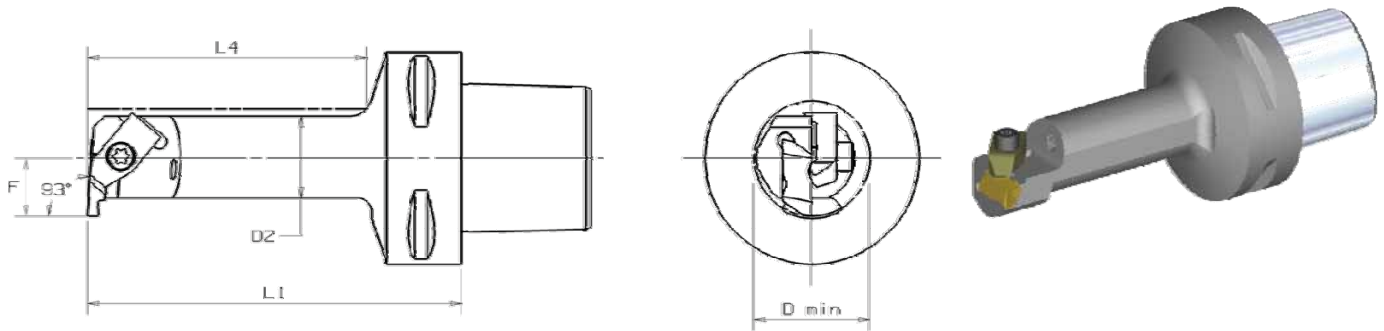
S – Clamping System ID



SVUB 93°

Order no.	PSC Size	Cat. No.	RH LH N	F mm	L1 mm	L4 mm	D2 mm	D min mm	Insert	Insert	Clamp screw
4103004	63	PSC63S25KSVUBR11	RH	17	125	98	25	32	VBMT110304	VBMT-221	MS-1153
4103005	63	PSC63S25KSVUBL11	LH	17	125	98	25	32	VBMT110304	VBMT-221	MS-1153
4103006	63	PSC63S32LSVUBR11	RH	22	140	64	32	40	VBMT110304	VBMT-221	MS-1153
4103007	63	PSC63S32LSVUBL11	LH	22	140	64	32	40	VBMT110304	VBMT-221	MS-1153

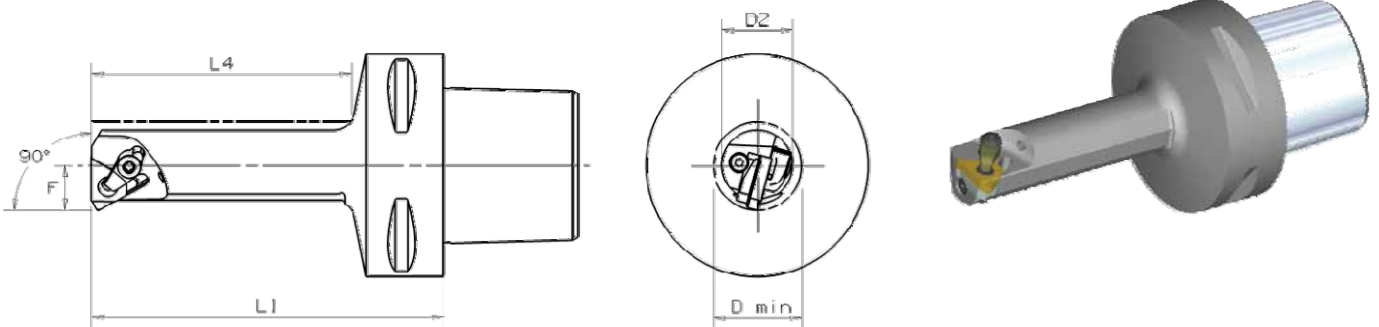
Threading and Grooving ID



NE

Order no.	PSC Size	Cat. No.	RH LH N	D2 mm	F mm	L1 mm	L4 mm	D min	Insert	Clamp	Clamp screw
4096060	63	PSC63S25JNER3	RH	25	17	110	83	34	NG-3L	CM-73	MS-1489
4096061	63	PSC63S25JNEL3	LH	25	17	110	83	34	NG-3R	CM-72	MS-1489
4096062	63	PSC63S32KNER3	RH	32	22	125	99	40	NG-3L	CM-73	MS-1489
4096073	63	PSC63S32KNEL3	LH	32	22	125	99	40	NG-3R	CM-72	MS-1489

Threading ID

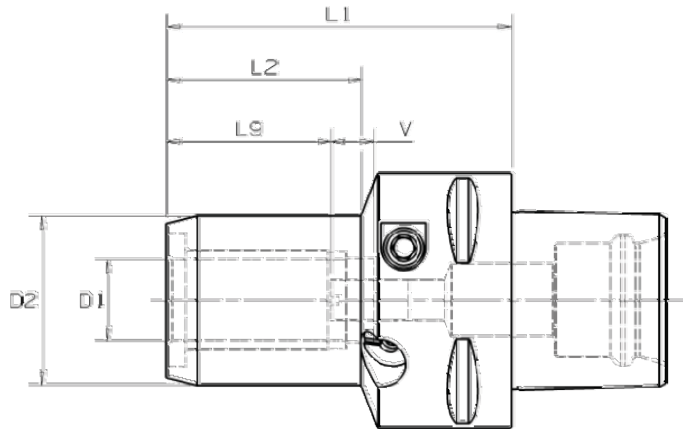


LSE

Order no.	PSC Size	Cat. No.	RH LH N	F mm	L1 mm	L4 mm	D2 mm	D min mm	Insert	Insert Screw	Shim	Shim screw	Clamp assembly
4104070	63	PSC63S20HLSE16	RH	14	100	72	20	25	LT16NR	SSA3T	SMYI3	SSY3T	CK-C3
4104071	63	PSC63S20HLSEL16	LH	14	100	72	20	25	LT16NL	SSA3T	SMYE3	SSY3T	CK-C3
4104072	63	PSC63S25JLSE16	RH	17	110	83	25	32	LT16NR	SSA3T	SMYI3	SSY3T	CK-C3
4104173	63	PSC63S25JLSEL16	LH	17	110	83	25	32	LT16NL	SSA3T	SMYE3	SSY3T	CK-C3
4104174	63	PSC63S32KLSE16	RH	22	125	99	32	40	LT16NR	SSA3T	SMYI3	SSY3T	CK-C3
4104175	63	PSC63S32KLSEL16	LH	22	125	99	32	40	LT16NL	SSA3T	SMYE3	SSY3T	CK-C3

Note: Insert Screw and Clamp Assembly can not be used at the same time

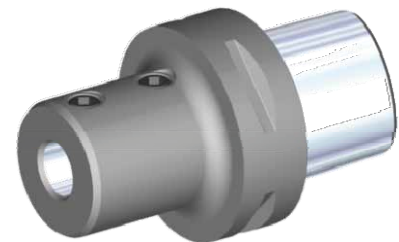
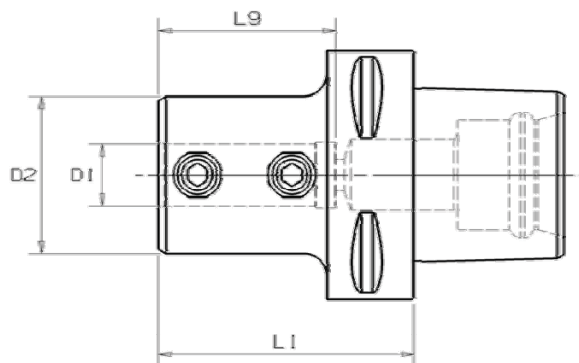
Hydraulic Chuck



Trend Line

Order no.	PSC Size	Cat. No.	D1 mm	D2 mm	L1 mm	L2 mm	L9 mm	V	actuation Wrench	wrench size actuation screw	length adjust. Wrench	wrench size stop screw
4092131	63	PSC63HC06070M	6	26	70	33	27	10	170.135	5 mm	170.002	2,5 mm
4113745	63	PSC63HC08070M	8	28	70	33	27	10	170.135	5 mm	170.002	2,5 mm
4113746	63	PSC63HC10075M	10	30	75	36	31	10	170.135	5 mm	170.002	2,5 mm
4113747	63	PSC63HC12080M	12	32	80	41	36	10	170.135	5 mm	170.002	2,5 mm
4113748	63	PSC63HC14080M	14	34	80	43	36	10	170.135	5 mm	170.003	3 mm
4113749	63	PSC63HC16080M	16	38	80	48	39	10	170.135	5 mm	170.003	3 mm
4113750	63	PSC63HC18080M	18	40	80	47	39	10	170.135	5 mm	170.003	3 mm
4113751	63	PSC63HC20085M	20	42	85	48	41	10	170.135	5 mm	170.003	3 mm
4113752	63	PSC63HC25095M	25	50	95	51	47	10	170.136	6 mm	170.004	4 mm
4113803	63	PSC63HC32100M	32	60	100	59	51	10	170.136	6 mm	170.004	4 mm

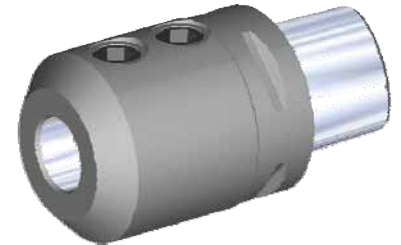
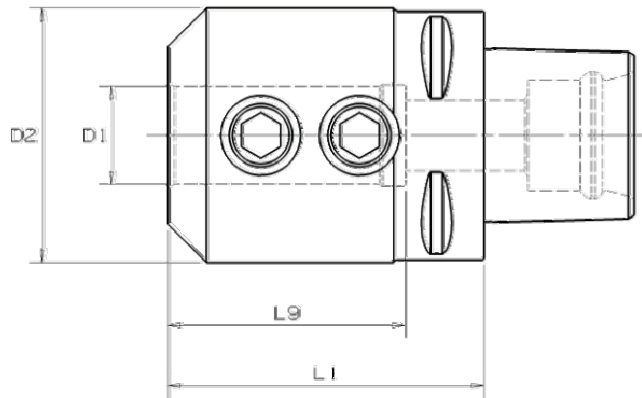
Boring Bar Adapter Internal Coolant



BAI

Order no.	PSC Size	Cat. No.	D1 mm	D2 mm	L1 mm	L9 mm	Set Screw	quantity	Torque Nm
4099179	63	PSC63BAI16065M	16	40	65	43	MS-1212	2	35
4099180	63	PSC63BAI20070M	20	40	70	48	MS-1212	2	35
4099181	63	PSC63BAI25070M	25	50	70	48	MS-1212	2	35
4099182	63	PSC63BAI32075M	32	63	75	53	MS-1946	2	35

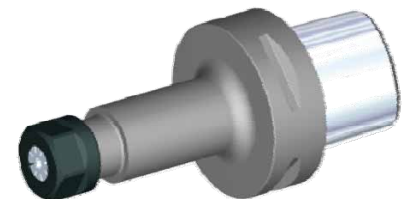
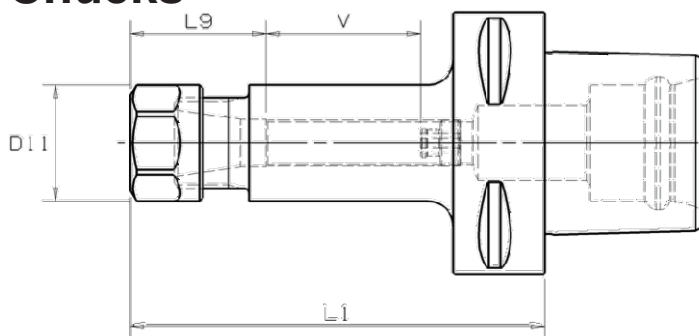
End Mill Adapter



EM

Order no.	PSC Size	Cat. No.	D1 mm	D2 mm	L1 mm	L9 mm	lock screw	lock screw quantity	torque Nm
4091398	63	PSC63EM06055M	6	24,5	55	33	SS03M012	1	7
4091399	63	PSC63EM08055M	8	27,5	55	33	SS03M014	1	15
4091400	63	PSC63EM10060M	10	34	60	38	SS03M018	1	25
4091401	63	PSC63EM12060M	12	41,5	60	38	SS03M023	1	35
4091402	63	PSC63EM16065M	16	47,5	65	43	SS03M025	1	50
4091403	63	PSC63EM20065M	20	51,5	65	43	SS03M026	1	95
4091404	63	PSC63EM25080M	25	64	80	58	SS03M027	2	135
4091405	63	PSC63EM32090M	32	71,5	90	68	SS03M029	2	160

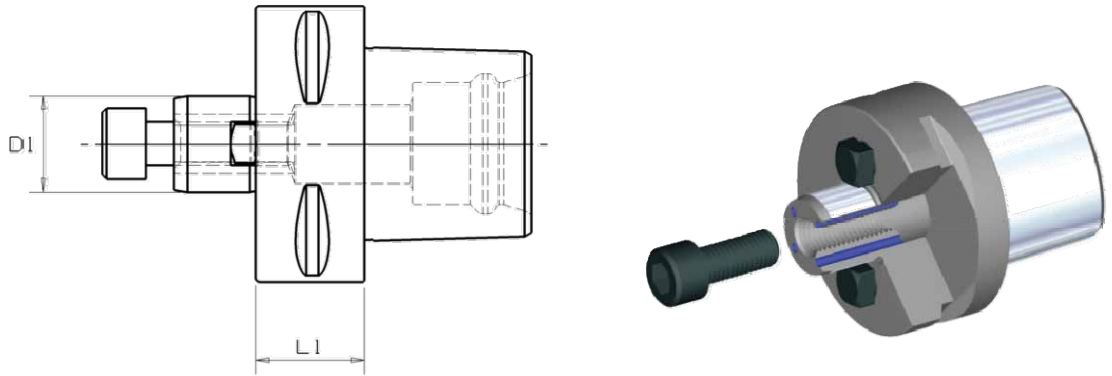
ER Collet Chucks



ER

Order no.	PSC Size	Cat. No.	ER size	D11 mm	L1 mm	L9 mm	V mm	Lock Nut	Actuation Hex	torque Nm	Wrench
4098565	63	PSC63ER16060M	16	28	60	32,8	-	LNHSER16M	25	40	OEW25M
4098566	63	PSC63ER16100M	16	28	100	32	38	LNHSER16M	25	40	OEW25M
4098567	63	PSC63ER25060M	25	42	60	41,2	-	LNSER25M	n/a	104	ER25WM
4098568	63	PSC63ER25130M	25	42	130	40	60	LNSER25M	n/a	104	ER25WM
4098569	63	PSC63ER32060M	32	50	60	47,3	-	LNSER32M	n/a	136	ER32WM
4098570	63	PSC63ER32130M	32	50	130	46	54	LNSER32M	n/a	136	ER32WM

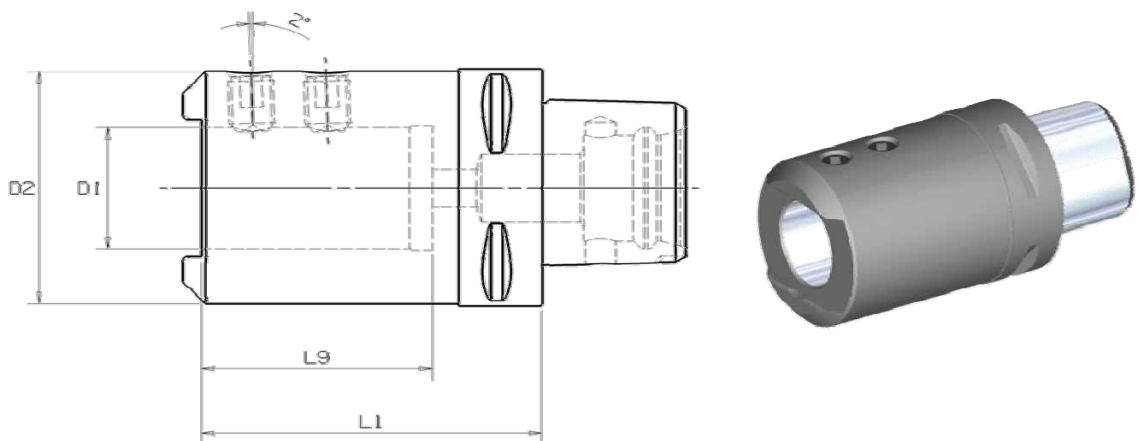
Shell Mill Adapter through coolant



SMC

Order no.	PSC Size	Cat. No.	D1 mm	L1 mm	drive key	lock screw
4091450	63	PSC63SMC22025M	22	25	KDK22M	MS1234
4091451	63	PSC63SMC27025M	27	25	KDK27M	KLSS27M

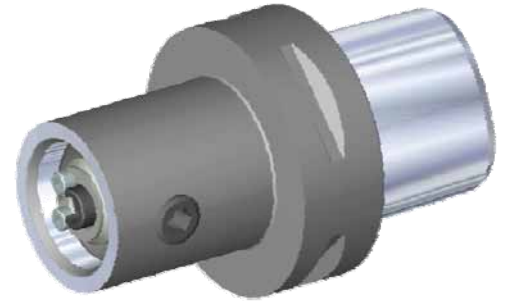
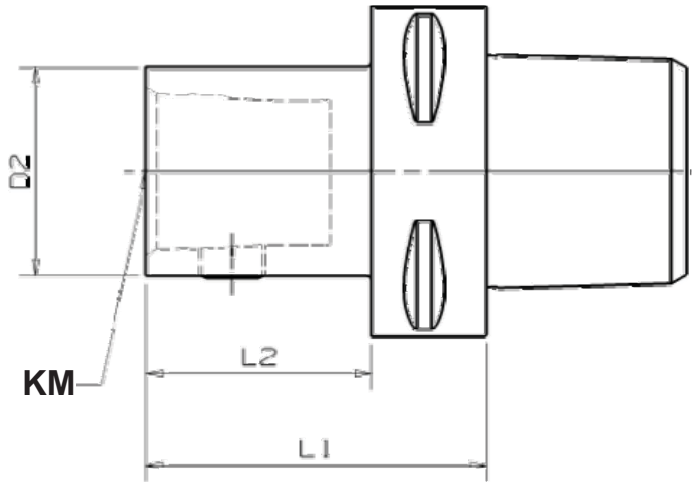
Drill Adapter



WD

Order no.	PSC Size	Cat. No.	D1 mm	L9 mm	L1 mm	D2 mm	screw 2x
4098571	63	PSC63WD32090M	32	61	90	62	SS03M023

PSC63™ to KM Clamping Unit



KM

Order no.	PSC Size	Cat. No.	KM size	D2 mm	L1 mm	L2 mm	Repair Package
3852030	63	PSC63KM40TS065M	40	40	65	43	KM40PKG3S
3852063	63	PSC63KM40TS090M	40	40	90	68	KM40PKG3S
3852031	63	PSC63KM50TS075M	50	50	75	53	KM50PKG3S
3852064	63	PSC63KM50TS090M	50	50	90	68	KM50PKG3S
3852032	63	PSC63KM63TS090M	63	63	90	-	KM63PKG3S
3852065	63	PSC63KM63TS105M	63	63	105	-	KM63PKG3S

Metalcutting Safety

IMPORTANT SAFETY INSTRUCTIONS

Read before using the tools in this catalog!

Projectile and Fragmentation Hazards:

Modern metalcutting operations involve high spindle and cutter speeds and high temperatures and cutting forces. Hot metal chips may fly off the workpiece during metalcutting. Although cutting tools are designed and manufactured to withstand high-cutting forces and temperatures, they can sometimes fragment, particularly if they are subjected to over-stress, severe impact, or other abuse.

To avoid injury:

- Always wear appropriate personal protective equipment, including safety goggles, when operating metalcutting machines or working nearby.
- Always make sure all machine guards are in place.

Breathing and Skin Contact Hazards:

Grinding carbide or other advanced cutting tool materials produce dust or mist containing metallic particles. Breathing this dust or mist — especially over an extended period — can cause temporary or permanent lung disease or make existing medical conditions worse. Contact with this dust or mist can irritate eyes, skin, and mucous membranes and may make existing skin conditions worse.

To avoid injury:

- Always wear breathing protection and safety goggles when grinding.
- Provide ventilation control and collect and properly dispose of dust, mist, or sludge from grinding.
- Avoid skin contact with dust or mist.

For more information, read the applicable Material Safety Data Sheet provided by Kennametal and consult General Industry Safety and Health Regulations, Part 1910, Title 29 of the Code of Federal Regulations.

These safety instructions are general guidelines. Many variables affect machining operations. It is impossible to cover every specific situation. The technical information included in this catalog and recommendations on machining practices may not apply to your particular operation. For more information, consult Kennametal's Metalcutting Safety booklet, available free from Kennametal at 724.539.5747 or fax 724.539.5439. For specific product safety and environmental questions, contact our Corporate Environmental Health and Safety Office at 724.539.5066 or fax 724.539.5372.

Kennametal, the stylized K and Erickson are trademarks of Kennametal, Inc. and are used as such herein. The absence of a product, service name, or logo from this list does not constitute a waiver of Kennametal's trademark or other intellectual property rights concerning that name or logo.

©Copyright 2011 by Kennametal Inc., Latrobe, PA 15650. All rights reserved.

ERICKSON™ PSC63™ PORTFOLIO

World and Corporate Headquarters

Kennametal Inc.
1600 Technology Way
Latrobe, PA 15650 USA
Phone: 800.446.7738 (United States and Canada)
E-mail: info@kennametal.com

European Headquarters

Kennametal Europe GmbH
Rheingoldstrasse 50
CH 8212 Neuhausen am Rheinfall
Switzerland
Phone: (41) 52.6750.100
E-mail: neuhausen.info@kennametal.com

Asia-Pacific Headquarters

Kennametal Pte. Ltd.
No. 11 Gul Link Jurong
Singapore 629381
Phone: (65) 6.2659222
E-mail: sales@kennametal.com.sg

India Headquarters

Kennametal India Limited
8/9th Mile, Tumkur Road
Bangalore - 560 073
Phone: +91 (80) 2839 4321
E-mail: bangalore.information@kennametal.com